



SAAB

SEAEYE COUGAR-XTi



THE DEEP WATER COMPACT WORK ROV

THE SEAEYE COUGAR-XTi is the deep water version of the compact, highly flexible and extremely powerful Cougar-XT.

As well as all the benefits of the Cougar-XT and the full range of optional quick-change tool skids, the Cougar-XTi also features ICON, Saab Seaeeye's new modular control system and a new concept in power distribution.

- Operational depth of 3000 msw
- Newly designed modular control system
- Fault tolerance for minimised downtime
- Non-invasive and automated self-diagnostics
- New concept in power distribution
- Reduced tether and umbilical diameter
- 80 kg payload
- Range of quick-change tooling skids
- Full range of handling systems and accessories



SEAEYE COUGAR-XTi CONTROL UNIT



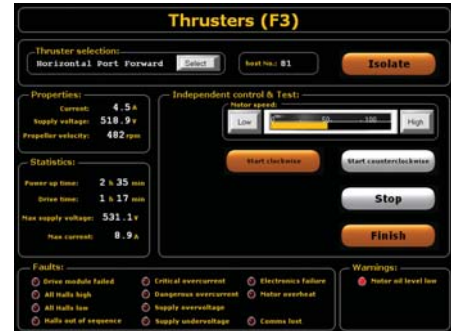
SEAEYE COUGAR-XTi

The Cougar-XTi has been developed to address the industry's need for a 3000m observation ROV, capable of providing 'self-help' and light work capabilities.

The system is based on the proven 2000m rated Cougar-XT, but with a new distributed intelligence control system, ICON, and a high frequency power supply system developed for deep water operations. These new systems have been developed and used in Saab Underwater System's military ROV systems.



- Minimal deck footprint: same footprint as a smaller observation ROV (Lynx for instance).
- Fault tolerance for minimised downtime, thanks to a new generation modular control system allowing remote individual switching and isolation of all subsea components.
- Non-invasive and automated self-diagnostics. Each subsea component can also be health-checked and interrogated for parameters such as power, temperature, hours run, etc.



- Advanced autopilots: heading, depth, pitch, roll, stabilisation, altitude (with altimeter). Future advanced autopilots (with additional sensors): station keeping, vector transition, auto riser-tracking.
- Remote internet interface for base and Seaeeye technical support.

SEAEYE COUGAR-XTi SPECIFICATIONS

SPECIFICATIONS	
Depth rating	3000 msw
Length	1515 mm
Height	905 mm
Width	1000 mm
Launch weight	580 kg
Forward speed	3.2 knots
Thrust forward	170 kgf
Thrust lateral	120 kgf
Thrust vertical	110 kgf
Payload	80 kg

SYSTEM POWER REQUIREMENTS	
Input	3-phase 380-480 VAC 50-60 Hz
ROV	20 kVA
TMS	3 kVA
Tooling	5 kVA
LARS (typical)	75 kVA
Cabin (typical)	12 kVA



Saab Seaeeye Ltd

20 Brunel Way, Segensworth East, Fareham, Hampshire, PO15 5SD, United Kingdom
Tel: +44 (0) 1489 898000 Fax: +44 (0) 1489 898001
e-mail: rovs@seaeeye.com www.seaeeye.com

